



GrossPath GP-1500

Special Worktable
with **active-carbon**
air recirculation system

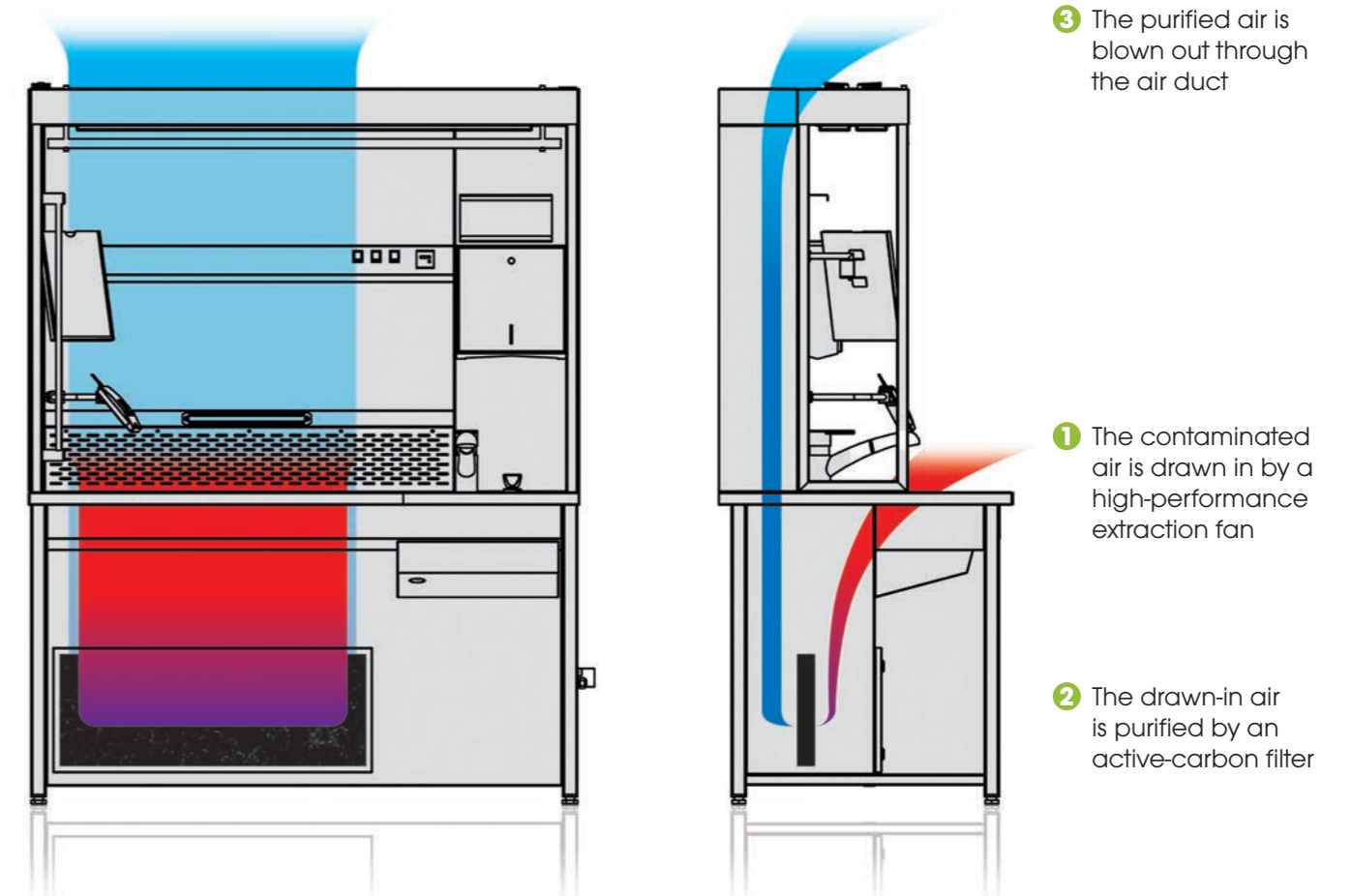
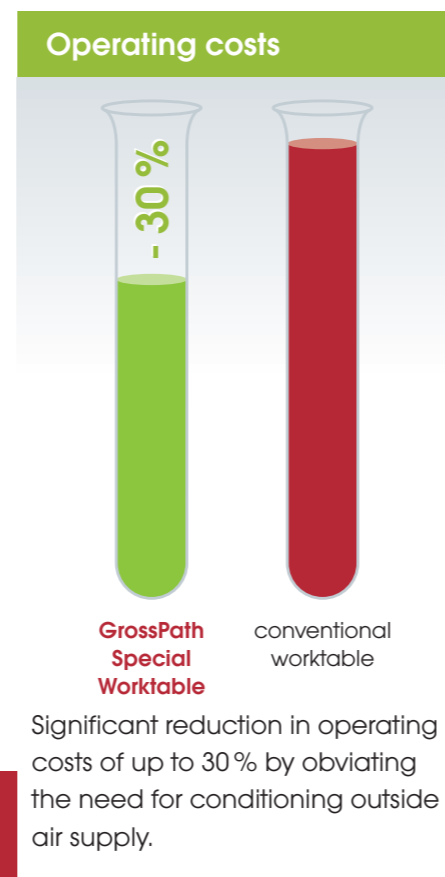
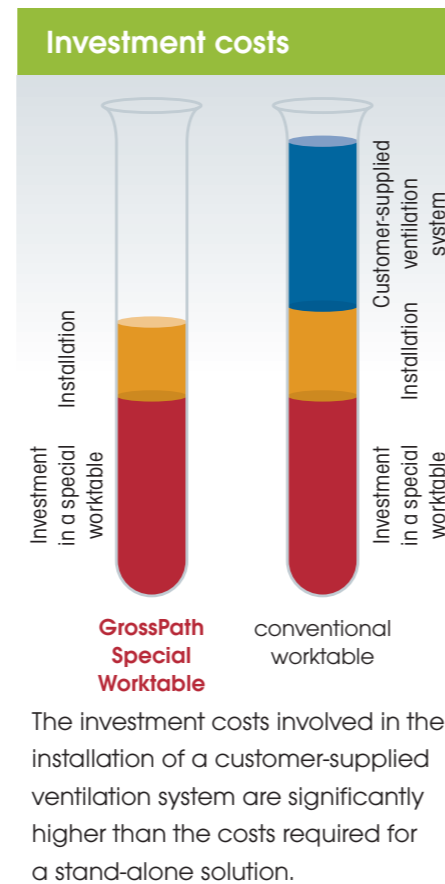
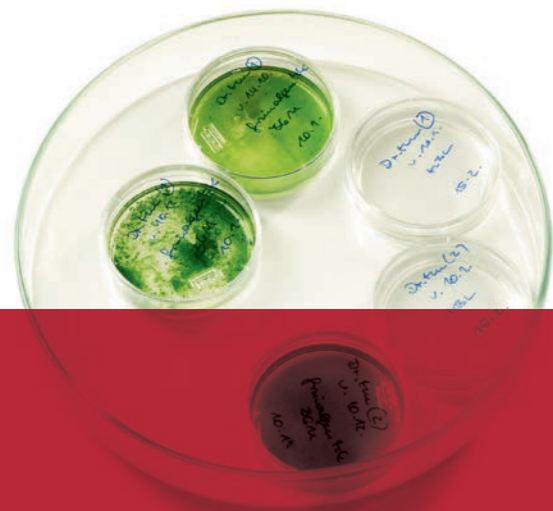
Plug in and work!

GrossPath – the special worktable designed to ensure a pollution-free, laboratory-grade working environment for slicing and preparing histological slide preparations. Its compact design makes the **GrossPath Special Worktable** the perfect laboratory equipment, especially for small facilities.

As a product of our **ECOline** range, this worktable has been designed with a special view to conserving energy and resources – while delivering outstanding extraction results.

Buy it, set it up and power it on: thanks to its generously proportioned **active-carbon air recirculation system**, the **GrossPath Special Worktable** is ready for immediate use – no need for installing a costly separate air ventilation system! The air is suction-extracted off the entire work surface from top to bottom – for optimized removal of any health-hazardous vapors. Formalin concentrations will even be significantly below the maximum allowable concentrations (MAC) throughout the entire extraction zone.

Long service life guaranteed thanks to the **GrossPath's** large-sized special active-carbon filter – for significant savings in operating costs. Filters can be replaced with ease and comfort through a large inspection hatch in the table's understructure.



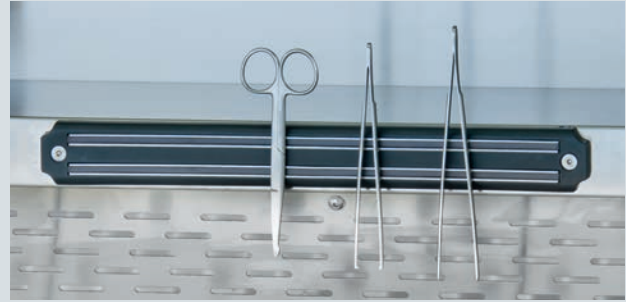
Technical advantages and details of the GrossPath GP-1500 Special Worktable:

- Dual workstation with extra-large work surface
- Structure made entirely of highly-polished stainless steel (material code no. 1.4301 – ANSI 304)
- Stationary lighting assembly providing „daylight quality“ conditions (approx. 5000° K) – for direct shooting without need of additional flashlight
- 230-Volt dual socket integrated in the lighting assembly
- Solid, self-supporting understructure with adjustable legs
- Lateral rod system for accommodating document holders or Dictaphone brackets (optional*)
- Railing system for easy installation of a variety of holders or brackets e.g. camera tripod or magnifying glass with embedded light (optional*)
- Seamlessly welded 370 x 370 x 150 mm sink
- Mixer tap with pull-out rinsing hose
- Extra-sturdy perforated metal sheet inserts (approx. 10 mm below rim level), D17, T60 perforation
- Integrated exhaust-air connection with volume flow control
- Air velocity at the perforated metal sheet inserts: 0,4 m/sec min.
- Integrated sprinkler system installed underneath the perforated metal sheet inserts, including regulating valve
- Formalin drain with strainer screen insert
- Exhaust air duct blowing from bottom to top
- **New:** optional electro-hydraulic height adjustable from 850 mm to 1050 mm

*Not included in the standard scope of delivery.



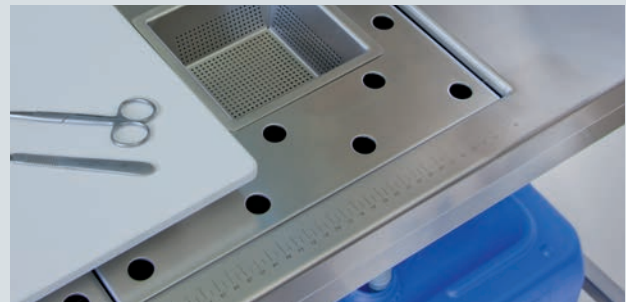
Flexible microphone holder FHH-SS-300



Magnet rail MS-300



Flexible scanner holder FH-SCAN-SS-300



Ruler at the worktable LIN-UCS



Paper dispenser made of stainless steel K-300
Medical glove dispenser HHK-UCS-1



Monitor holder MT-SET-BEA
Keyboard holder THS-SS



Camera holder KA-H-400

Technical Data

Dimensions table W/D/H:	1500 x 800 x 850/1950 mm
Dimensions illumination W/D/H:	1500 x 300 x 1100 mm
Exhaust air capacity:	approx. 750 m ³ /h
Material:	stainless steel (1.4301 – ANSI 304)
Perforated working area:	approx. 960 x 670 mm
Cold/Warm water connection:	DN 15
Waste water connection:	DN 50

Pictured accessories optional – not included in the standard scope of delivery.

Subject to technical modifications as required by products improvements (Version 05/2011)

Product Overview

Gross-Path GP-1500
Article-No.: 060.205.100

Height adjustment for Gross-Path GP-1500
Article-No.: 069.900.205

Active-carbon filter
Typ: AKF-700-750/200
Article-No.: 060.260.016